



1250 HWY 98 in Eastpoint, FL 32328

# SEAHAWK NATION NEWSLETTER

Contact Us: 850-670-2800 or fax 850-670-2801

Term: Spring | Vol. 1 Issue 8



## KEY DATES

### Week of May 16 - May 20, 2022

## SPORTS

**Monday, May 16th** - EOY STAR Assessment - 2nd grade  
 FSA 7th, 9th, & 10th Grade ELA Reading Session 1 | 5th grade Science Session 1 | Both start at 8:00 a.m.  
**Football Signs Fundraiser - May 2nd - Jul. 29, 2022** | Call 850-670-2800 for more informaton.  
 Franklin County School Board Workshop from 5:00 - 6:00 p.m.  
**Tuesday, May 17th** - EOY STAR Assessment - 1st grade  
 FSA 7th, 9th, & 10th Grade ELA Reading Session 2 | 5th Grade Science Session 2 | Both start at 8:00 a.m.  
 Employee Insurance Open Enrollment  
 Reading Buddies 1:50 - 2:30 p.m.  
**Wednesday, May 18th** - FSA US HISTORY EOC, FCLE EXAM, 8th Grade Science, 8:00 a.m. | EOY STAR Assessment - KG  
 National Honor Society Meeting from 12:00 - 1:00 p.m. (Mrs. Strunk's Rm. 1220)  
 Football Leadership Meeting from 12:30 - 1:00 p.m. (Mrs. Strunk's Rm. 1220)  
 6th Grade Field Trip: Florida History Museum  
**Thursday, May 19th** - Biology 1 EOC begins at 8:00 a.m.  
**Senior/KG Stroll** - Classes will line the inner sidewalks to cheer as Seniors & KG make their way from the cafeteria to the office and end at the picnic tables/Gym beginning around 10 a.m.  
 McCullers Field Trip: Tallahassee Museum  
 S.W.A.T. Meeting - Middle School from 7:30 - 8:00 a.m. | High School from 12:30 - 1:00 p.m.  
**All Sports Banquet 6:00 - 8:00 p.m.**  
**Friday, May 20th - Elem. Field Day/Pi Event**(students will rotate through PE activities & do Pi Day events. If you signed up to volunteer to take a pie to the face come to field day prepared).  
 8th Grade Field Trip  
**Sophomore Ring Ceremony in the media center**  
 Professional Development Needs Assessment Survey is due by 3:00 p.m. Please review the email sent by Karen Ward.  
 PE Event: Elementary Field Day (k-2) from 9:00 - 10:00 a.m. | (3-5) from 1:00 - 2:30 p.m.  
 Spanish ESOL Field Trip: In District from 10:00 - 2:00 p.m.

**May 16th** - JV Cheer Clinic from 3:00 - 5:00 p.m.  
 Spring Football Practice from 3:00 - 5:15 p.m.  
**May 17th** - JV Cheer Clinic from 3:00 - 5:00 p.m.  
 Spring Football Practice- 3:00 - 5:15 p.m.  
**May 18th** - JV Cheer Clinic from 3:00 - 5:00 p.m.  
 Spring Football Practice from 3:00 - 5:15 p.m.  
**May 19th** - JV Cheer Clinic 3:00 - 5:00 p.m.  
 Spring Football Practice from 3:00 - 5:15 p.m.  
**May 20th** - JV Cheer Tryouts from 3:00 - 5:00 p.m.  
 Spring Football Practice from 3:00 - 5:15 p.m.

**\*Be sure to check the official calendar on our website for all updates.**

Our Seahawk Nation Newsletters and more district headlines can also be found on our website (see URL in the bottom right corner).

If you have ideas, announcements, or events that need to be included, please reach out to our FCSD Chief Information Officer, Morgan Martin, at [mmartin@franklincountyschools.org](mailto:mmartin@franklincountyschools.org) or 850-670-2810 Ext. 4111

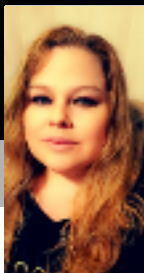
**All submissions should be emailed to Morgan by Monday at 5 p.m. weekly. Thank you.**

**A lot of SCHOLARSHIPS are available but many of their deadlines are quickly approaching.** All applications are on the website and with our guidance counselor.

FSU Panama City Talent Search Program. This program identifies and assists individuals from disadvantaged backgrounds who have potential to succeed in higher education. They are opening registration for their summer camps help at FSU Tallahassee taking place **June 18-July 1**. All expenses are covered (meals, housing and transportation) Complete the Talent Search Application in the flyer attached or contact Shelia Labissiere at [slabissiere@fsu.edu](mailto:slabissiere@fsu.edu).

## Seahawk Spotlight

Thank you for all you do!



**Ms. Shannon Watson moved here from Panama City Beach, Florida, in 2016 and started as a substitute teacher. Ms. Watson says, "It wasn't long before I wanted a career as a paraprofessional; I spent the next few years as the para for our PRE-K ESE classroom.**

**After asking about her favorite part of the job, she notes, "I absolutely love working with children with different abilities, they touch your heart, but this year wanted to try something new and try my hand at VPK." Shannon adds, "It warms my heart to be a part of so many children's lives here in Franklin County.**

**Congratulations,**

**Ms. Shannon Watson!**

## Happy Birthday



- May 15th - Patricia "Patty" Dempsey
- May 15th - Lori Kern
- May 16th - Andrea Keuchel
- May 19th - Karyl Gavigan

## LUNCH MENU



### Monday

- Hotdog
- WG Hamburger
- Sweet Potato Fries
- Baked Beans
- Fruit Choice

### Tuesday

- Mac & Cheese w/Ham
- WG Corndog
- Peas and Carrots
- Green Beans
- Fruit Choice

### Wednesday

- Hamburger Steak
- Chicken Chunks/Roll
- Mashed Potatoes
- Brown Gravy
- Turnip Green
- Fruit Choice

### Thursday

- Max Sticks
- Ham and Cheese Sub
- Baby Carrots
- Steamed Corn
- Fruit Choice

### Friday

- WG Pizza
- Side Salad
- Roasted Broccoli
- Fresh Fruit